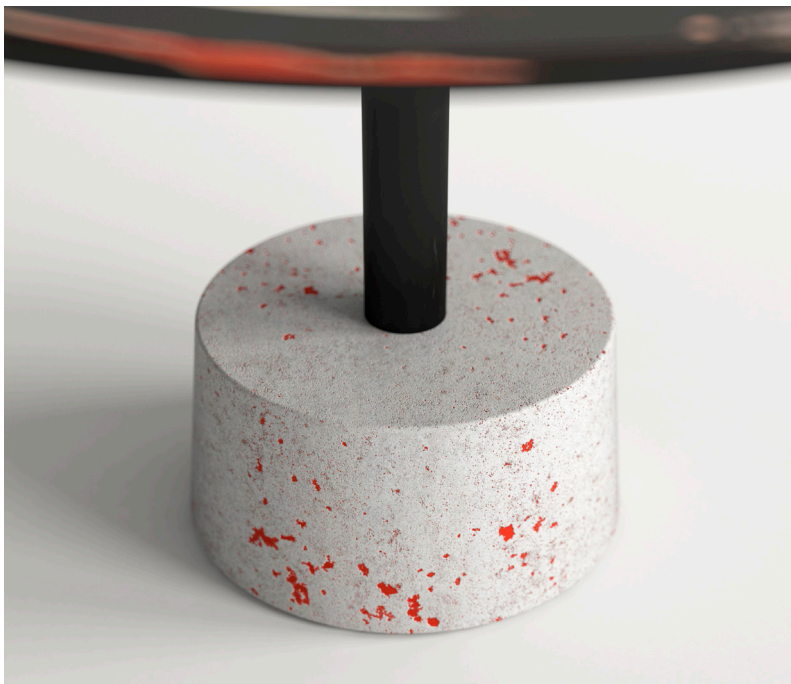




ASTRALITI

side tables

Astraliti originated from an artistic project linked to the contemplation of the universe and their creation was the result of a special process of manual workmanship by our Creative Atelier. The games of colours and shades follow the movement of the artist's hand and as such are unique and unrepeatable, confirming that each piece is unique. Astralites are available in 5 pieces that can be grouped according to the colours which are split between cold and warm shades. The artistic creation rests on a shiny black metal stem in strong contrast with the lively texture of the concrete rock-like pedestal.



In the pictures, the Astraliti tables with top featuring polychrome texturised scagliola and matching concrete rock-like pedestal.

TECHNICAL DESCRIPTION

STRUCTURE
Top in layered laminate mm.13 thick
Metal stem and concrete rock-like base

FINITURA
Top with Scagliola Materico texture effect applied manually (M)
Cement base

FINISHES

TOP
Colours as colours palettes MATERICO (M).

Base
Concrete rock

DIMENSIONS

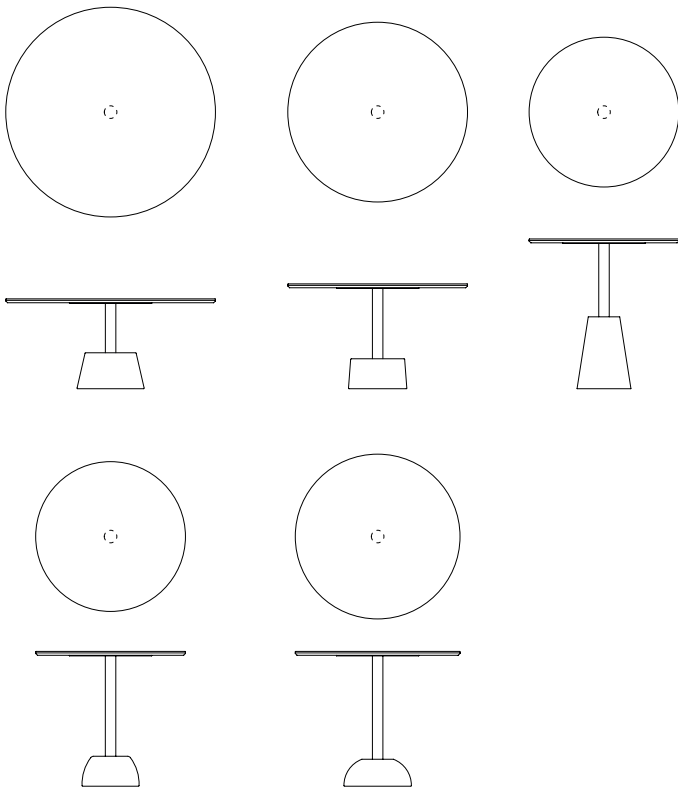
ø cm 70 h. 30
ø 27.5" h. 12"

ø cm 60 h. 35
ø 23.6" h. 13.7"

ø cm 50 h. 50
ø 19.7" h. 19.7"

ø cm 50 h. 45
ø 19.7" h. 17.7"

ø cm 55 h. 45
ø 21.6" h. 12"



The company reserves the right to make changes to product models without prior notice.
The scagliola effect is applied manually by the artist. Therefore, any differences and imperfections are not to be considered defects but characteristic features showing the uniqueness of the work. The finishes provided are indicative only. Please, browse the complete finishes palette.